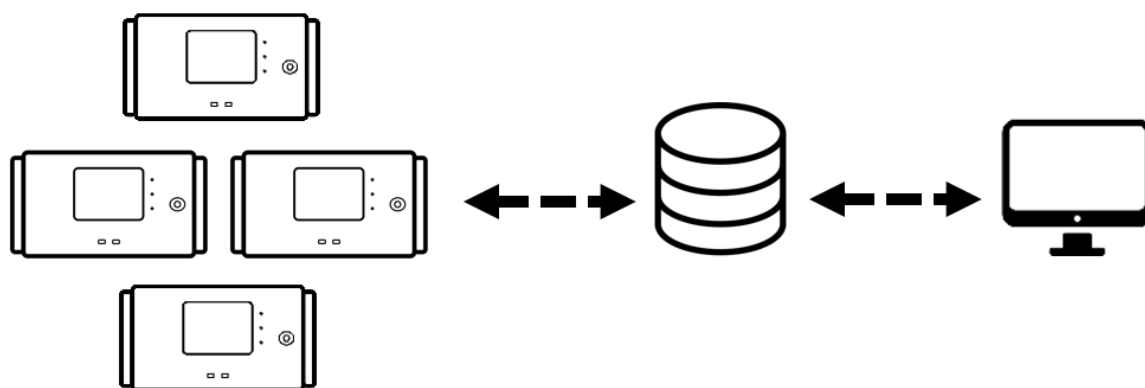


Remote management of **Aethalometer**[®] networks



AethNET™

- Constant monitoring
- Real time access to data
- Assured instrument performance
- Easy data analysis
- Secured data
- Easy deployment



Manufactured in Europe by
Aerosol d.o.o., Slovenia

Stay connected. Be assured. Anywhere. Anytime.

Constant monitoring

AethNET is practical when operating one instrument and essential when operating many, especially if not easily available.

AethNET enables constant control of your data without ever leaving the office. Even instrument parameters can be changed remotely if needed.

Real-time access to data

Data is stored at data center and is available on-line. Depending on your needs, the data center can be located in the cloud or on user premises.

Authorized users can access the system from anywhere with internet connection.

Identifying issues

Detailed diagnostics and data visualization tools help the operators pinpoint and fix potential issues.

Assured instrument performance

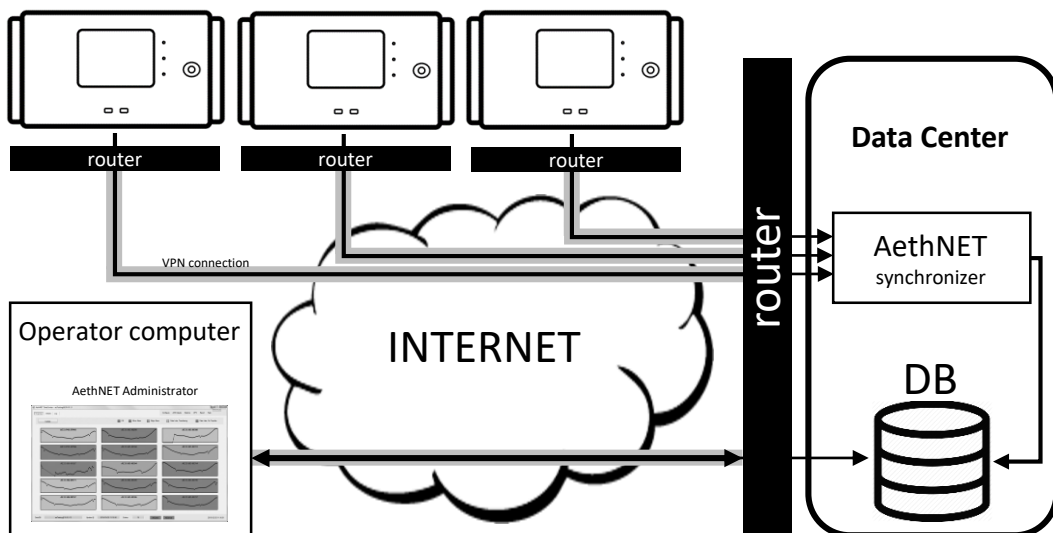
All data received by the data center is automatically checked for validity. In addition to the instrument status, other parameters are also checked. In case of equipment malfunction immediate e-mail alerts are sent to the operators. Daily reports are sent at midnight to provide an overview of instrument performance.

Easy data analysis

Data is stored in a database and can be accessed with tools like Excel, Origin, Matlab or Igor.

Remote support

All instrument data is available at the data center including instrument logs and setup. Experts at Aerosol d.o.o. can connect to your system and verify instrument performance.



AethNET network

Why to choose AethNET?

AethNET is an integrated hardware and software package that makes Aethalometers accessible over the internet. Aethalometer data is sent to one or many data centers in real-time over a broadband internet network. At data centers the data is analyzed, stored and made available for the users wherever an internet connection is available. Alarms, e-mail notifications and daily reports are used to alert operators of potential problems so immediate action can be taken to prevent data loss.

AethNET configurations

AethNET™ comes in 2 configurations:

1. **Cloud** – as a subscription service. Your data is stored in a cloud.
2. **Data Center** – as a software solution. Your data is stored on your server.

AethNET Cloud

Flexible choice with all functionalities.

Your data is hosted in a cloud.

Connect your Aethalometer Model AE33 to a preconfigured router, install software on your computer and you are set to go.

Cloud is a subscription service.

AethNET Data Center

Full control of your network.

Your data is stored in your server.

We help you set-up a data center on your server and connect your Aethalometers Model AE33 to a preconfigured routers so you have a full control of complete network.

Data Center is a software solution.

Knowing that your instrument is operating properly is of utmost importance for any operator. This is especially true when the instrument is located in a remote location. Even if the instrument is located in your office, **AethNET** provides reassurance outside work hours and without checking the instrument. **AethNET** provides detailed diagnostics and data visualization to help pinpoint and fix potential issues. Data analysis is made simpler with **AethNET**, as all data is stored in a centralized database and always available to the authorized users.

Product specifications

BENEFITS

Be assured

- Improved data validity.
- Reassurance that the instruments are working properly.
- Data can be visualized and issues diagnosed.
- Automatic reports.

Stay connected

- No need for field trips to check up on instruments.
- Data available in real-time.
- Instrument parameters can be changed remotely.
- Data is stored in a database for easy analysis.

KEY FEATURES

- In addition to BC parameter (measured with Aethalometer AE33), external devices can be added for other air quality parameters.
- All **AethNET** devices (Aethalometers, routers, UPS, servers) can be controlled remotely from the office.
- Instrument and network state of health is available to the operators.
- Diagnostic and data visualization tools.
- Automatic data validation.
- Color coding, e-mail notifications and reports.
- Data transfer statistics to help identify problematic connections.
- New instruments are automatically detected.
- All data is stored in Windows SQL server database.
- VPN is used for secure communication.
- Can run in parallel with other data acquisition systems.

KEY REQUIREMENTS

Black Carbon measuring device

Aethalometer® AE33

Internet infrastructure

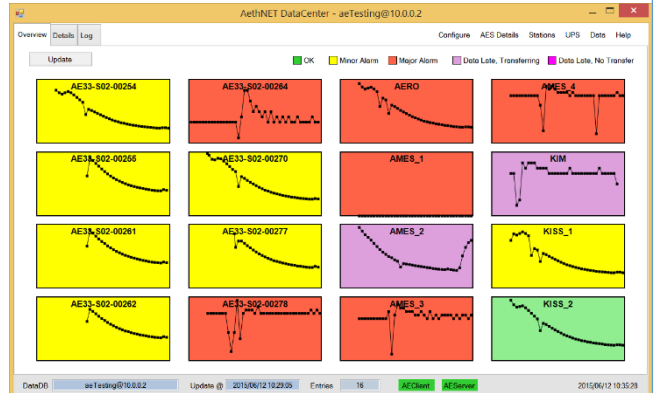
1 Mbps at field stations and
10 Mbps at the data center

Database

MicroSoft SQL server



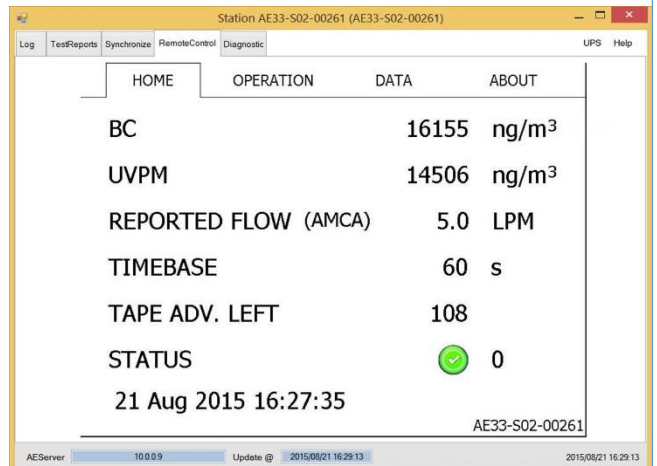
Scan the code for more info



AethNET Administrator: Overview tab

StationName	IP	Sns	BC	BCavg	K	Kavg	TAlert	TAlert	Flow	cpu	disk	speed	dataIn	dataOut	lastDataTime
AE33-S02-00254	10.0.0.83	0	1918	1808	3.573e-3	5.023e-3	405	0.00	5005	5	7317	0.017	21024	0	2015/06/12 14:04
AE33-S02-00255	10.0.0.85	0	2223	1577	6.789e-3	6.201e-3	407	0.00	4998	5	7311	0.017	26257	0	2015/06/12 14:05
AE33-S02-00261	10.0.0.81	0	1779	1274	2.971e-3	2.242e-3	418	0.00	5012	5	7311	0.017	24205	10890	2015/06/12 14:04
AE33-S02-00262	10.0.0.79	0	2094	1429	4.101e-3	4.875e-3	277	0.00	5008	5	7645	0.017	24028	20457	2015/06/12 14:04
AE33-S02-00264	10.0.0.43	290	11	3	9.851e-3	9.831e-3	87	0.00	5004	5	7302	0.017	39979	18876	2015/06/12 14:05
AE33-S02-00270	10.0.0.82	0	1851	1778	2.804e-3	3.187e-3	102	0.00	5010	5	7303	0.017	37285	0	2015/06/12 14:06
AE33-S02-00277	10.0.0.78	0	1909	1701	3.896e-3	2.713e-3	411	0.00	5003	5	7844	0.017	22844	0	2015/06/12 14:02
AE33-S02-00278	10.0.0.34	290	4	0	9.476e-3	18.116e-3	82	0.00	5004	5	7297	0.017	47274	0	2015/06/12 14:07
AERO	10.0.0.77	0	1706	1631	1.444e-3	3.806e-3	394	1.57	4998	5	7632	0.017	84639	0	2015/06/12 14:04
AMES_1	10.0.0.31	290	0	0	1e-5	0	95	0.00	0	5	7316	0.017	22710	0	2015/06/12 14:05
AMES_2	10.0.0.22	0	1582	1415	7.318e-4	3.788e-3	333	18.83	5000	7	6808	0.017	135512	0	2015/06/12 10:35
AMES_3	10.0.0.33	290	7	1	9.895e-3	8.771e-3	89	0.00	4999	5	7303	0.017	78854	0	2015/06/12 14:03
AMES_4	10.0.0.39	290	11	0	9.950e-3	9.205e-3	80	0.00	4998	5	7299	0.017	44904	0	2015/06/12 14:04
KIM	10.0.0.32	290	27	0	3e-5	7e-0	94	0.00	4992	5	7318	0.017	22709	0	2015/06/12 09:34
KISS_1	10.0.0.76	0	2121	1704	5.807e-3	6.127e-3	334	1.57	5006	6	7300	0.017	42971	0	2015/06/12 14:05
KISS_2	10.0.0.84	0	1728	1492	8.186e-4	1.231e-3	395	0.00	5001	5	7300	0.017	41862	0	2015/06/12 14:03

AethNET Administrator: Details tab



AethNET Administrator: Remote Control

GENERAL INQUIRIES:

Aerosol d.o.o., Kamniška 41, SI-1000 Ljubljana, Slovenia
tel: +386(1)4391700 fax: +386 59 191 221 www.aerosol.eu

US, Mexico, Canada:
Magee Scientific Corp., 1916 M.L. King Jr. Way,
Berkeley CA 94704, USA tel: +15108452801 fax: +15108457137
www.mageescientific.com

or the distributor responsible for your country.